



# MONTHLY MEMBERSHIP PROGRESS REPORT

District 322C3

Results as of: 11/30/2018

GMT: SWADESH RANJAN SAHA

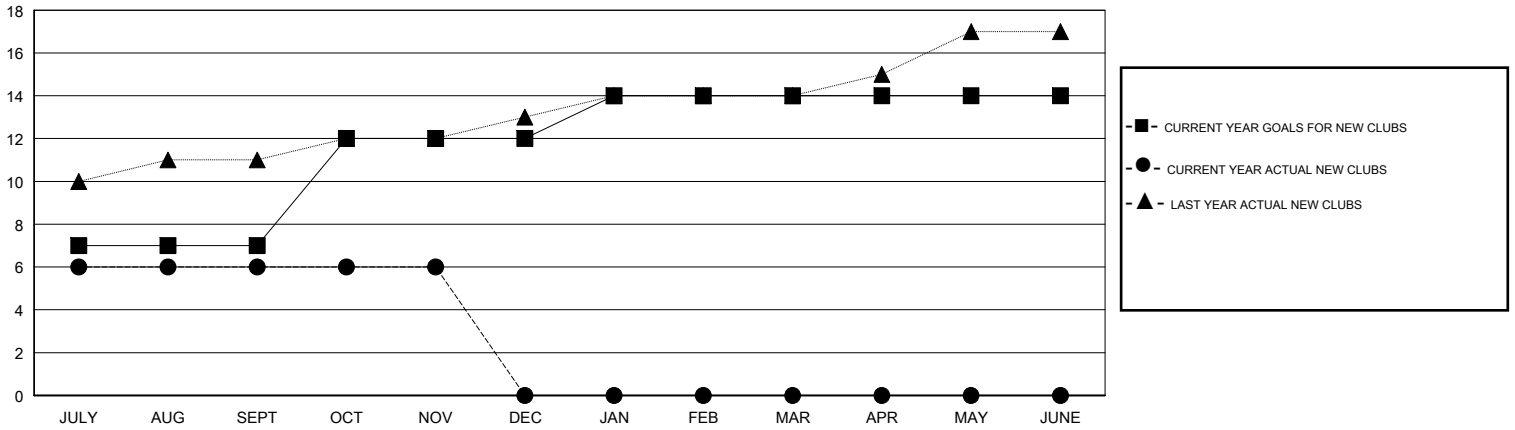
LOCATION INDIA

GMT CA

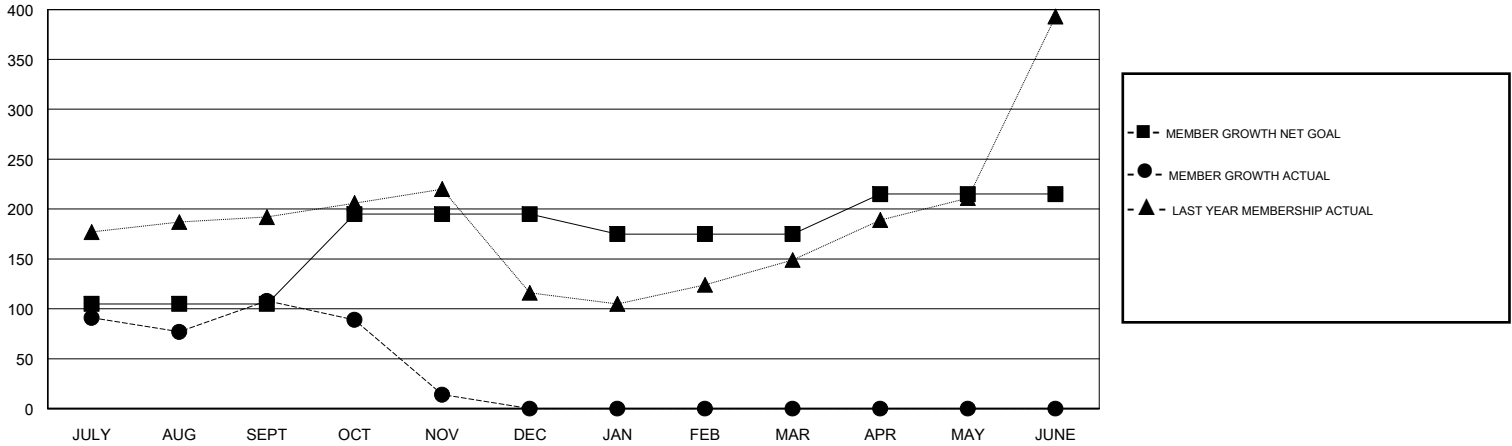
Clubs			
RESULTS FOR 2018-2019			
QUARTER	NEW CLUB GOAL	NEW CLUBS	DROPPED CLUBS
JULY/AUG/SEPT	7	6	2
OCT/NOV/DEC	5	0	2
JAN/FEB/MAR	2	0	0
APR/MAY/JUNE	0	0	0

Members			
RESULTS FOR 2018-2019			
QUARTER	MEMBER GROWTH NET GOAL	MEMBER GROWTH ACTUAL	DROPPED MEMBERS ACTUAL (including transfers)
JULY/AUG/SEPT	105	250	132
OCT/NOV/DEC	90	28	121
JAN/FEB/MAR	-20	0	0
APR/MAY/JUNE	40	0	0

GOALS AND ACTUAL NEW CLUBS CUMULATIVE



GOALS AND ACTUAL MEMBERS CUMULATIVE



DROPPED CLUBS: 4	38 CLUBS OF 114 ADDED 1 OR MORE NEW MEMBERS	<u>GENDER DISTRIBUTION</u>	
DROPPED MEMBERS		MALE	2,866 (73.89%)
DECEASED	12	FEMALE	1,013 (26.11%)
CLUB CANCELLED	104	Women Percentage Fiscal Year Goal: 26%	
OTHER	137	TOTAL FAMILY UNIT MEMBERS	2,564
TOTAL	253	FAMILY MEMBERS PAYING HALF DUES	1,611

[CLICK HERE FOR CUMULATIVE MEMBERSHIP DATA](#)